



mosaic
cell sciences a division of Organovo

Healthy & MASH/MASLD Hepatocyte Solutions



www.mosaiccellsci.com



619-407-8332



Info@mosaiccellsci.com

Customerservice@mosaiccellsci.com



Healthy and MASH/MASLD Hepatocytes provide high quality solutions for research and discovery programs.

Mosaic Cell Sciences Primary Human Hepatocyte solutions advance the specific needs of our partners' applications in drug discovery, ADME/ toxicology, and etiopathology of disease. Our experts isolate liver cell populations from donors using strict criterion to ensure high post-thaw viability and post-thaw yield, curtailing the effects of warm and cold ischemia from donor organs and tissues. With over 45 years of isolating cells from human organ and tissue donors, our dedicated team of scientists supplies hepatic parenchymal and also nonparenchymal cells with exceptional functional and phenotypic properties to advance your scientific discoveries.

We provide our healthy and MASH/MASLD hepatocytes with exceptional post-thaw yield and post-thaw viability to produce high fidelity models of liver function and drug metabolism. Additional information regarding batch- specific assessment of our hepatocyte solutions include:

- Viability and yield for each donor-derived lot
- Characteristic morphology of functional hepatocytes
- Thawing and handling instructions for optimal plating of cells
- Board Certified Pathologist assessment of MASH/MASLD score by histopathology, provided with H&E and trichrome staining.
- Positive expression of functional hepatocyte proteins, Albumin and ASGR1/ ASGPR1
- Hepatocytes negative for alpha fetoprotein (associated with liver cancer)
- Extensive Donor information, including serology, representative images, BMI, cause of death, medical history, and alcohol use provided in the Certificate of Analysis for each batch-specific lot.

Mosaic Cell Sciences currently offers hepatocyte solutions for your applications. In addition, discover how combining our hepatocytes with our nonparenchymal hepatic cell solutions can further your drug discovery efforts by recapitulating the complex interplay of cell populations in healthy and disease models of the liver.

Plateable healthy Hepatocytes

Primary human hepatocytes from healthy donors permit scientists to uniquely assess the innate heterogeneity within humans for in vitro testing of novel therapeutics, toxicity, drug-drug interaction pathways, and more. Mosaic Cell Sciences' plateable hepatocytes are ideally utilized to interrogate hepatocyte drug metabolism and drug toxicity in either 2D or 3D models.

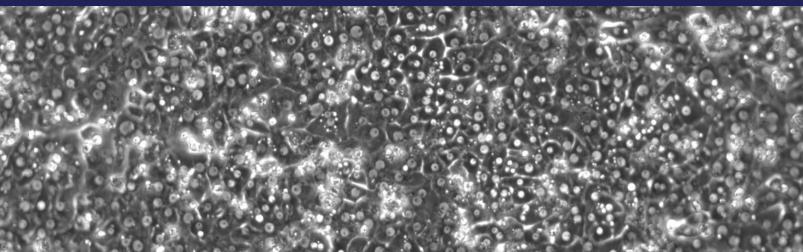
Plateable MASH/MASLD Hepatocytes

Mosaic Cell Sciences offers human MASH/MASLD hepatocytes for the recapitulation of pathologically relevant liver models for drug discovery, DILI/DDI, and hepatotoxicity purposes. With a quarter of US adults afflicted with MASLD and about 5% of this population suffering from MASH, novel therapeutic interventions require additional testing considerations to ensure therapeutic efficacy during their drug development processes. Our plateable MASH/MASLD hepatocytes provide a unique solution to interrogate the heterogeneity of this pathology in either 2D or 3D model systems.

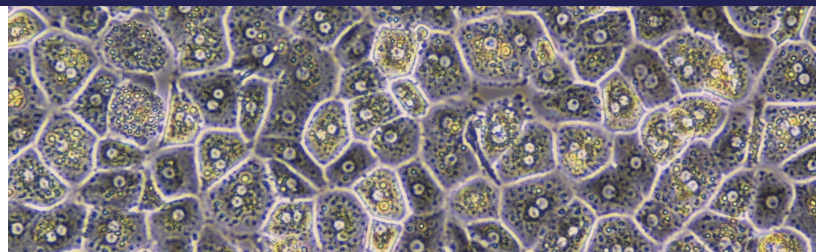
Suspension Grade Healthy and MASH/MASLD Hepatocytes

Suspension grade hepatocytes offer a quick and efficient system for studying the metabolism of new compounds. Their suspension state allows for a faster response to test substances compared to hepatocytes cultured in traditional monolayer formats. These hepatocytes provide a valuable in vitro model for predicting certain aspects of drug metabolism to help identify potential issues early in the drug development process, such as Drug-Drug Interactions.

Phase-contrast micrograph of primary human hepatocyte monolayer plated on collagen type I coated plastic plates. Hepatocytes display typical morphology, including highly refractive cell-cell contacts, indicative of bile canaliculi formation.



Phase-contrast image of freshly plated hepatocytes, 12 hrs post-plating.



Mosaic Cell Sciences provides healthy and MASH/MASLD hepatocytes and nonparenchymal cells with exceptional post-thaw yield and post-thaw viability to produce high fidelity models of liver function and drug metabolism. Batch specific information provided with all of cell solutions.

Primary Human Hepatocytes

Product	Description (Available as healthy or MASH/MASLD)
120803-03	Human hepatocytes - cryopreserved. 5-10 x 10 ⁶ viable cells/vial
120803-06	Human hepatocytes - fresh plated. 5-10 x 10 ⁶ viable cells/vial
120803-19	Human hepatocytes - suspension. 5-10 x 10 ⁶ viable cells/vial

Other Hepatic Hepatocytes

Product	Description (Available as healthy or MASH/MASLD)
120503-03	Human liver endothelial cells - cryopreserved. 1x10 ⁶ cells/vial
121903-03	Human liver stellate cells - cryopreserved. 1x10 ⁶ cells/vial
121103-03	Human Kupffer Cells - cryopreserved. 1x10 ⁶ cells/vial
120606	Human liver tissue - formalin fixed
121906	Human liver tissue - snap frozen

Connect with our experts to learn more about how our solutions can meet your needs!

 619-407-8332

 Info@mosaiccellsci.com

Organovo 12160808-01

© 2024 Mosaic Cell Sciences,
a division of Organovo 12160808-01



Visit us online to learn more!

www.mosaiccellsci.com